

Decoration Catalogue



Index

- 1. Immmes + Architecture
- 3. Why choose glass
- 9. Wallpaper
- 13. Living area
- 38. Bathroom area
- 73. Dining room and kitchens
- 90. Swimming pools and outdoor

I + A

Immunes + Architecture

Design solutions with glass and wallpaper processing

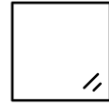
Innovation, cutting-edge solutions and low environmental impact, are the key points of Immunes that have always pushed to do research for new ideas and creations.

Our experienced team is constantly looking for new materials and graphic technologies, ensuring high quality and performance.

The know-how of Immunes and our team's creativity are available to the customer in order to meet any stylistic desire, leaving freedom of customization in order to make each environment totally unique and exclusive, for private residences and hotels.

Each realization is made to measure, with the possibility of creating continuity with the interiors and exteriors, as well as coordination with the compliments of furniture, thanks to the remarkable graphic quality.

The team will support the customer all through the project, from creation to installation, taking care of every detail.

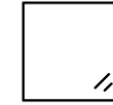


WHY CHOOSE GLASS

Let's say first of all that glass can be printed, and since printing comes from digital graphic sources, an almost infinite range of decorations is allowed in which elements of nature (marble, wood, composite elements) are shown or where creative people and designers specialized in this type of surface are engaged. The print is then welded by cooking in the glass, thus making it indissoluble and unalterable.

Glass decorations on walls and floors have multiple advantages.

First by examining the product, the glass allows a brilliant surface towards the user and, although with the anti-reflective treatment, allows the refraction of light.



The glass allows processing of thicknesses ranging from 3 to 12 millimeters (even more in particular conditions) giving an unparalleled effect of depth to the decoration, being the image shown in the back face.

Glass allows to combine surface processing (either through engraving or deriving from the structure of the glass or from decorative surface treatments), either of geometric-linear or floral-artistic type, to the underlying decoration, creating unique combinations of greater three-dimensionality and effect.

The glass, given the size of the plates available, allows you to make the most of the width of the print images (remember that they are very high definition, 1,200 dpi) that reach up to 6 x 2 meters and in any case the graphic design of the environment allows you to divide the spaces, and the slabs, with modules of regular size. On large surfaces, infinite combinations are allowed in the continuity of the image between plate and plate. We cite as an example the continuity of the "open stain" in the decorations that reproduce natural elements such as wood and marble.

The glass is chosen because, while maintaining the chosen decoration, it allows to realize the back lighting and to have a homogeneously perfect diffusion of the light behind.

Glass is a raw material that can be produced with a nuance in the basic colors, from full transparent to green, from smoked to bronze, thus multiplying the possible effects of the decorations on the setting. Without prejudice to the chosen decoration, the glass allows different characterizations: from tempra or hardening, to surface characteristics such as anti-reflective, scratch-resistant, opaque, screen-printed to reach, in floor applications, non-slip (representative is the application in the floors of bathrooms) in the various safety classes provided.



WHY CHOOSE GLASS: HOW A GLASS BECOMES DECORATED GLASS

Glass printing is a technique that we could define as "ancient". What is evolving, and makes the difference in the design of these years, is the quality of printing, both in terms of the definition of printing, and in the techniques of consolidation of color in glass. Another rewarding and constantly evolving aspect is the availability of increasingly high resolution graphic media (files). We remind how the resolution of the source must find satisfaction in the printing performances allowed by the machine. Large graphic media (files) can reach printing developments up to 6 meters made with a definition of 1,200 dpi.



To add value to all this we need huge three-dimensional scanners capable of scanning materials of all kinds in the world of stones, marble and onyx, in the world of woods and plants, in the world of metals and foils, including "artistic" corrosion the world of sands, lands and various compositions, and even laboratory creations with composite materials with resin and liquid inserts.

In addition to natural origin materials, artistic works made by hand by professional designers are scanned. The artists are available to create unique and exclusive designs.

All files can also be reworked post digitization to achieve color variations or simply vary the shades of individual veins or, as in normal photographic development, vary the contrasts or brightness.

The printing technique then requires software-driven machines that can support these files while maintaining the definition of the source. The color is then hardened and "baked" in the glass in order to integrate it and make it unalterable and immovable.

The realization of the rooms is usually designed in order to divide the spaces between the various slabs or to create slabs for floors in order to fill exactly the space between wall and wall.

At this stage it is possible to define an overall design for the whole environment and then the detail for each slab so that you can then recreate in the laying the unique design. All the files are defined and archived for possible successive replicas also of the single plate.



WHY GLASS SHOULD BE CHOSEN: HOW BEST TO USE IT

This technique allows you to coordinate several surfaces creating a unique and harmonized design. The same decorations (and their variants) are available for the production of tops for furniture, kitchens, wardrobe doors, shower cabins, doors, headboards, exploiting the application of the same printing source on glasses of different sizes, shapes and thicknesses.

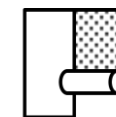
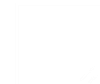
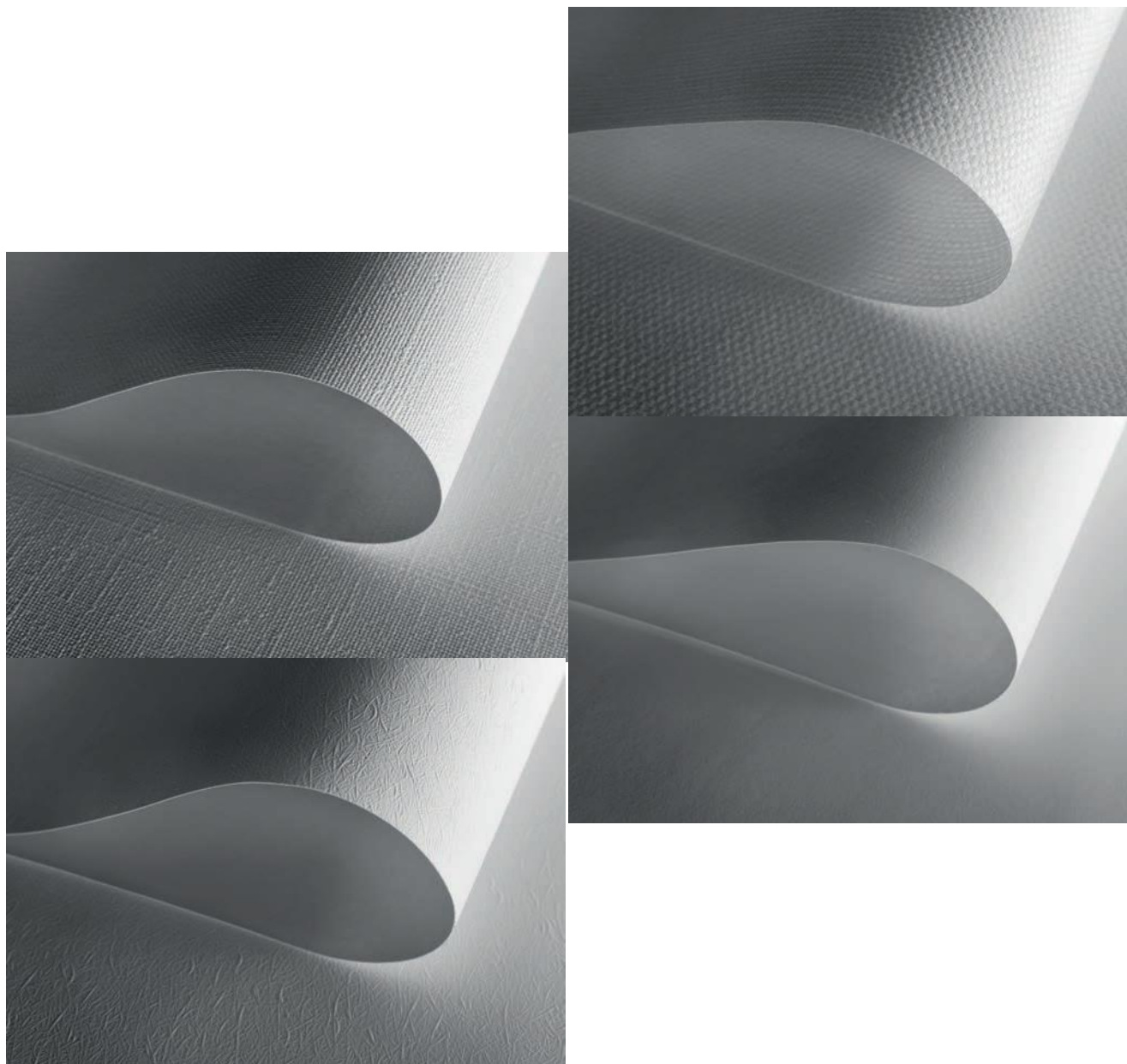
A further area in the use is the world of wallpaper.

It's almost superfluous at this point to note that they can also be made using the same decorations, or decorations in matching shades.

More relevant to note is the artistic contribution that characterizes the collections available; important furniture brands that have tried to create environments. All transformed into large files for the customization of your spaces.

But this is exactly what you can do to see your customers' tastes or creativity fulfilled.

To complete our presentation we add a service of design environments created by real professionals in the industry, both in direct contact with the user, both for support of the same.



THE WALLPAPER

The wallpaper proposed by Immmes includes two vinyl-coated papers, a non-textile fabric paper and a fiberglass that can be used in wet areas.

Thanks to continuous research and innovation, all types of wallpaper have high technical performance, accompanied by specific certifications, from the strength of the material, to the stability of light, to the resistance to fire and water. The papers are easily washable and they are produced with ecological and odorless inks.

The textures are refined and pleasant to the touch, with an optical white base that highlights the depth and colors of any design.

Glass and wallpaper are perfectly suited for the decoration of environments of various character, thanks to the wide range of original graphics you can give space to artistic creativity to make each location customized and unique.

WHY TO CHOOSE IMMES

Immes partners with professional designers to ensure high technical quality and unique performances.

Designers provide their creativity and know-how, making each design exclusive and created specifically for each décor and to satisfy every stylistic desire.

Through internal and external collaboration with renowned international professionals and guaranteed suppliers, Immes is able to offer all the services needed to complete a designer furnishings.

Furthermore, a dedicated staff is exclusively responsible for providing the best 360 degree support, from offer to aftersales.

We leave you to the catalogue's vision of ambience proposals which are just a starting point for your creativity.



MARIA CHRISTINA HAMEL

Born in New Delhi to an Austrian father and Italian mother, designer Maria Christina Hamel grew up between Central Europe, Asia, and the Mediterranean. She has been firmly convinced of her design vocation since childhood. Her particular style originated from and was strongly influenced by her own multicultural and cosmopolitan background, ranging from her love of masters such as William Morris and the Vienna Secession to pop culture, and her meetings with the exponents of the Radical design movement in Milan and Florence, as well as her extensive travels.



PAOLO IACCHETTI

Paolo Iacchetti was born in Milan in 1953, where he still lives and works today. An established artist he exhibits in Italy, Switzerland, and Germany. His works can be found in public and private collections in Europe and Canada. He taught 'Psychology of Form' and 'Colour' at the Polytechnic School of Design in Milan, and 'Psychology of Art' and 'Theories of Form' at the Catholic University of Brescia.



GUMDESIGN _ ART DIRECTOR

They deal with architecture, industrial design, graphics, art direction for companies and events. Among their clients Antoniolumi, Biennale di Venezia, De Castelli, De Vecchi Milano 1935, Museo Pecci, Nastro Azzurro, Red Bull Italia, San Pellegrino, Styl'Editions, Triennale di Milano. They have won many prizes, among which Award Edida 2021 for the Borghi collection designed for antoniolumi, Adi Booth Design Award 2012 for stand antoniolumi, Nomination Edida 2020 for the Gessati collection designed for antoniolumi, Adi Booth Design Award 2019 category Research for stand Styl'Editions, the Premio Donna del Marmo 2019, Best Communicator Award 2014, the First Prize at the Creativity International Competition "Swiss in Cheese". They are involved, in the University area, with open classes, workshops and they cooperate with the "Free University" of Bolzano, the Cried of Milan, the led of Florence and Rome; since 2017 they are coordinators and teachers of the first Masters in Design - Innovation and Product for High- Crafts at the IED Florence.



MATALI CRASSET

Matali Crasset is an internationally renowned French designer. Since her training at the Ateliers-ENSCI in the 1990s, she defended design as a mixture of artistic, anthropological and social practice. She works for a design of the creation, of the living and the everyday: how can design contribute to live together and accompany us in the contemporary world? It is from this simple yet committed premise that she thinks and works "in motion". For 30 years, she has been inventing her own unique path, nourished by the hundreds of projects she has carried out in architecture as well as in scenography, object design, furniture, public spaces and layout. Her work is exhibited in cultural institutions in France and abroad, and it is included in the major design collections of museums, from the Moma in New York to the Centre Pompidou.



LUCA DALL'OLIO

Luca Dall'Olio is a graduate of the Brera Academy. His primary means of expression is acrylic painting, but his works also include screen printing, sculpture, and photography. His chosen media range from acrylic paint and gold leaf to lead, wood, steel, iron, and copper. His travels to discover the world and the most hidden places of his beloved Italy have always offered Dall'Olio endless inspiration for his art, as well as an opportunity to filter and reinterpret faces, landscapes, cities, and distant cultures. He participated in the XII Rome Quadrennial and in 2011 was chosen to feature among the artists destined for the Italian Pavilion at the 54th Venice Biennale. His commitment to social issues has recently led to him working in art-therapy projects and workshops with disabled children.



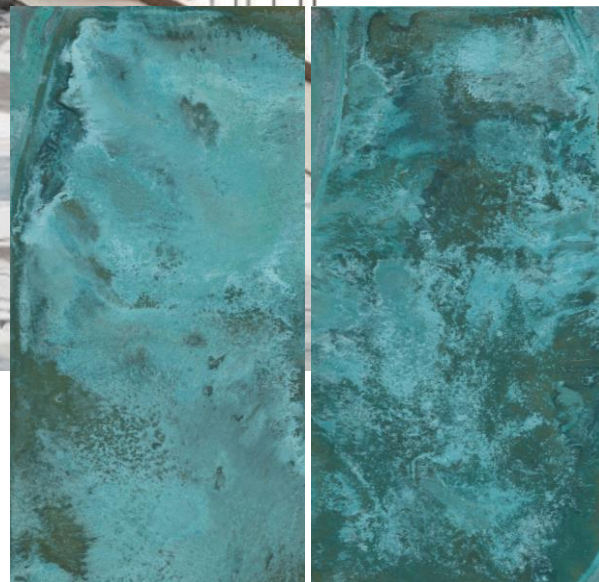
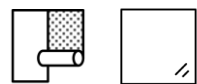
CARLO GALLI

Carlo Galli is a visual artist who lives and works in Milan, who experiments with different everyday materials such as vinyl and adhesive tape. He participates in different international art residencies, such as the Bag Factory in Johannesburg and Alternate Residency in Williamsburg, NY. In 2020, at the Karachi Biennale, he created a signal tape installation in Bin Qasim Park. Between 2020 and 2021, he collaborated with South African curator and founder of Studio Nxumalo Musa Nxumalo, and completed projects with businesses such as Japanese company MT Masking-Tape, Milanese firms Indigital and Rossetti Group, as well as Styl'Editions, based in Emilia Romagna.

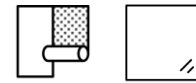
Living area



Gem Glass
FP31547C

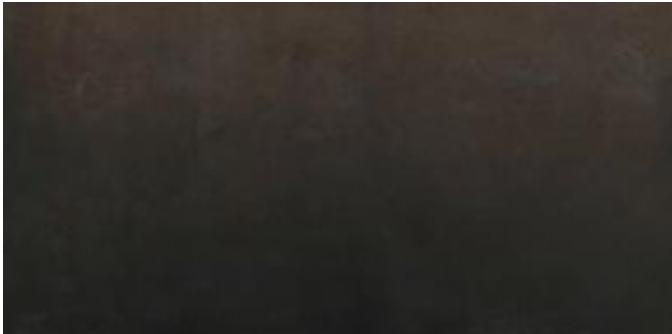
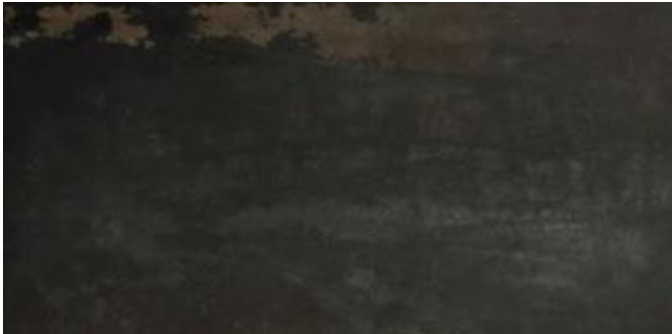
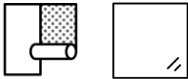


Marmi scuri
FP31052A



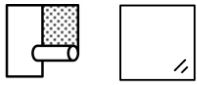
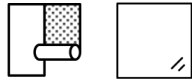


Effetti
SHP31795A





Effetti
FP31602

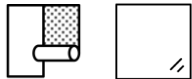


Marmi scuri
FP31092A

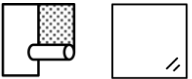


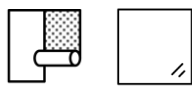


Effetti
FP31481 - Vanda



Effetti
FP31728 - Flora

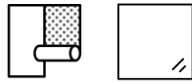




Decor
FP31919



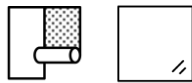
Decori
FP31658



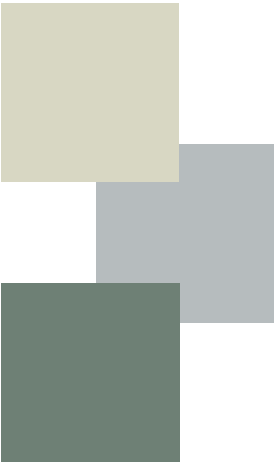
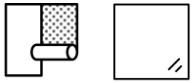
Decori
FP31965



Decori
FP33990



Decori
FP33853

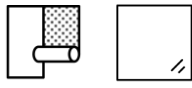


Effetti
FP34149

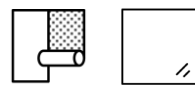




Effetti
SHP31677

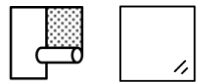


Effetti
FP31311E





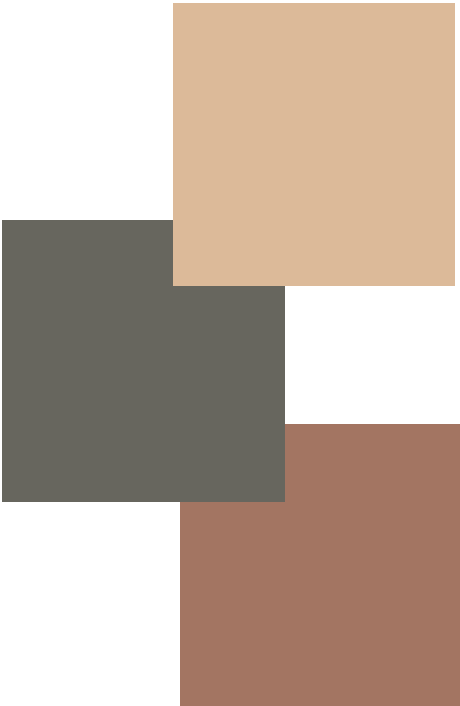
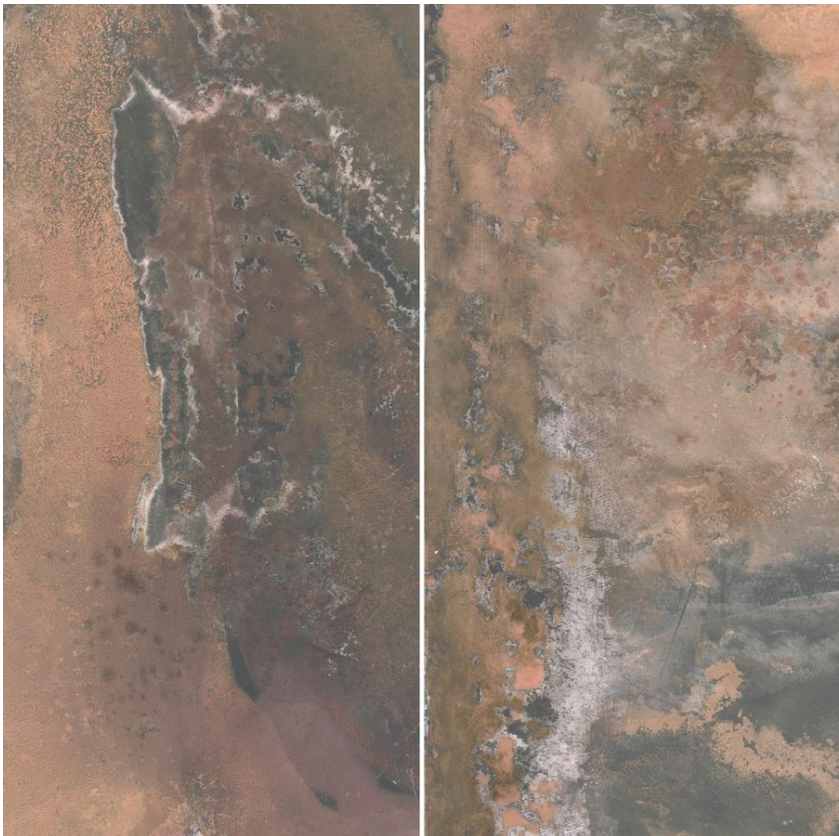
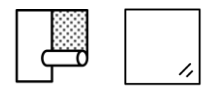
Effetti
FP31315





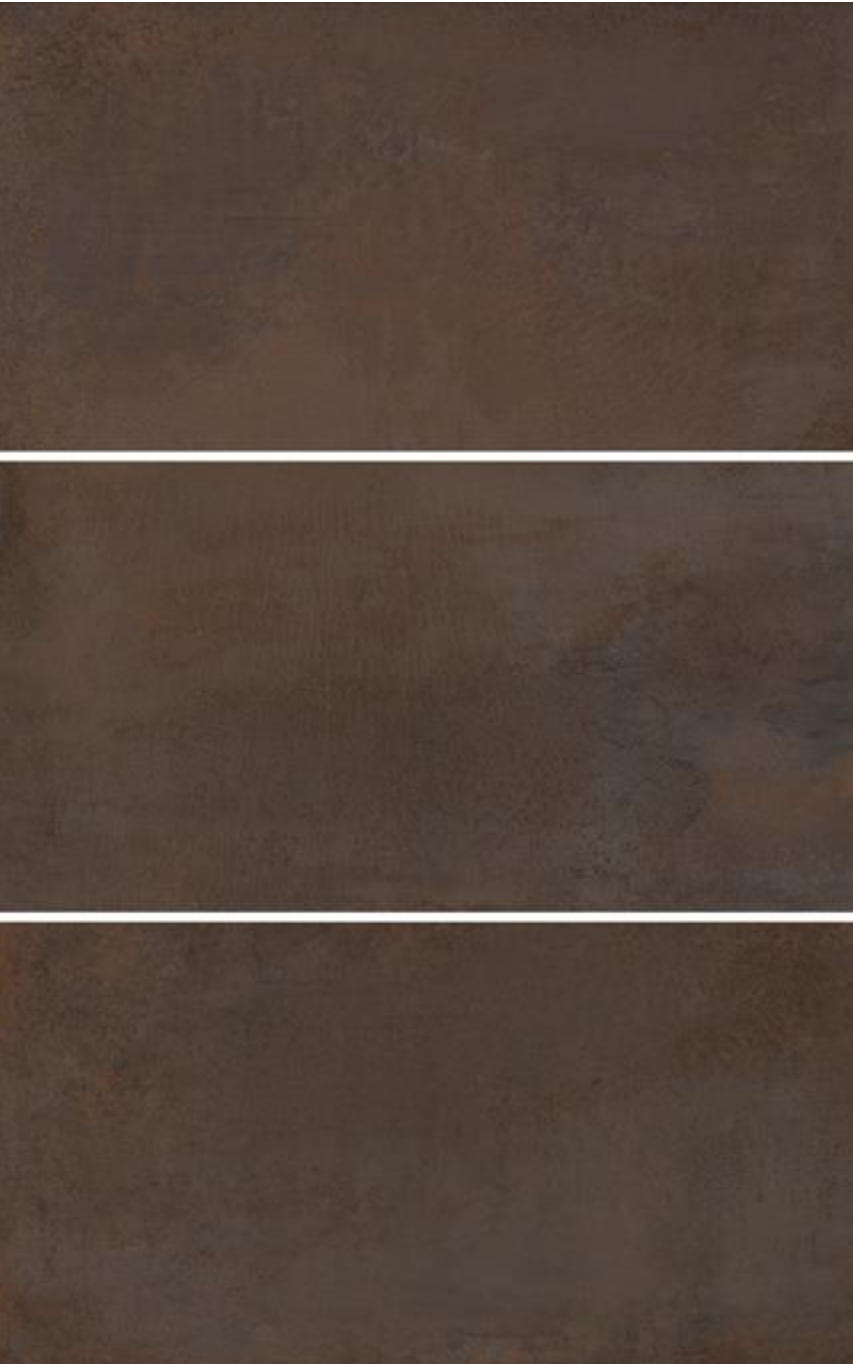
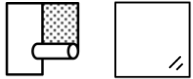
Bathroom

Gem Glass
FP31421

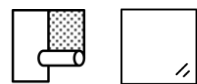




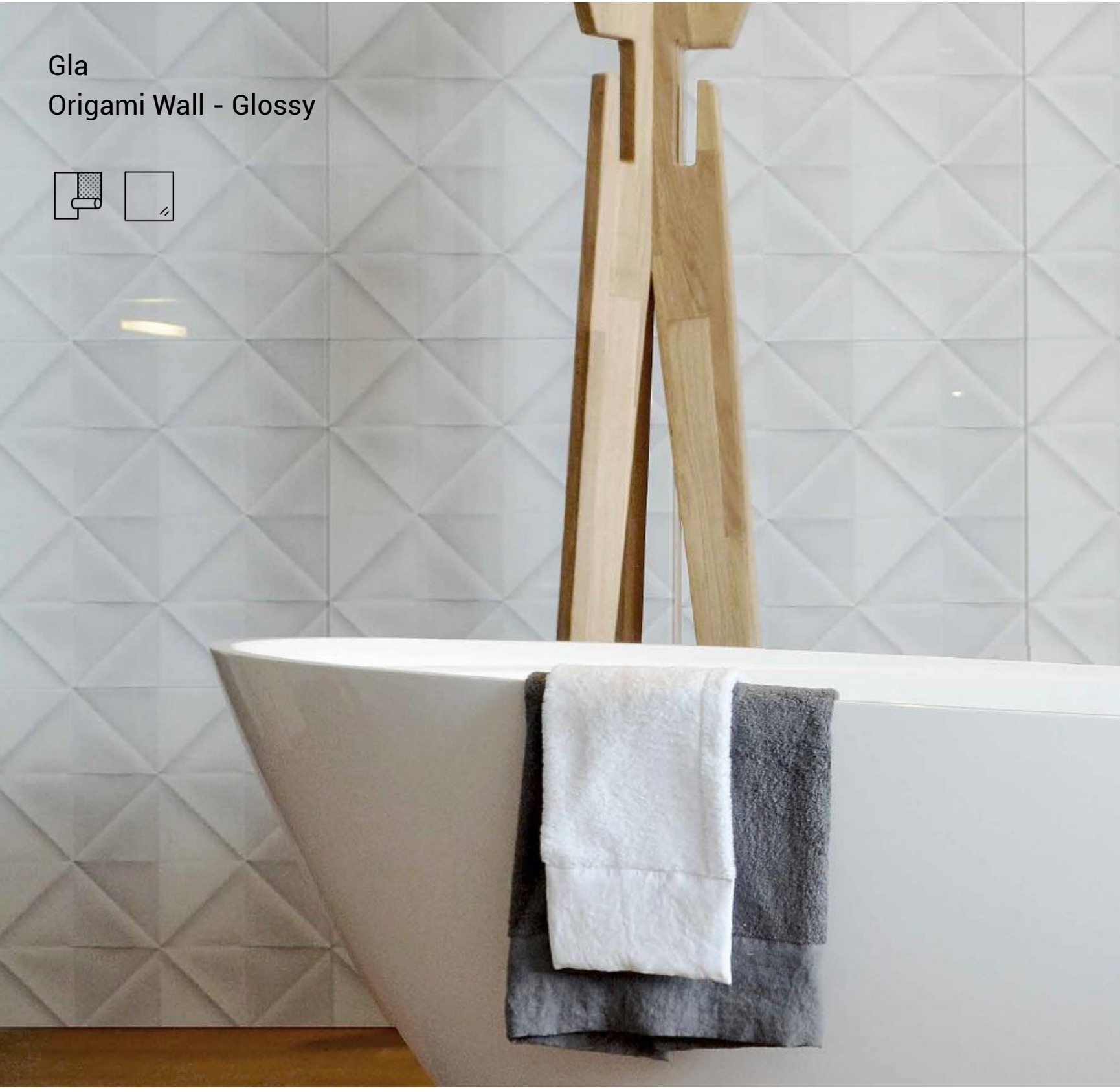
Effetti
SHP30439A



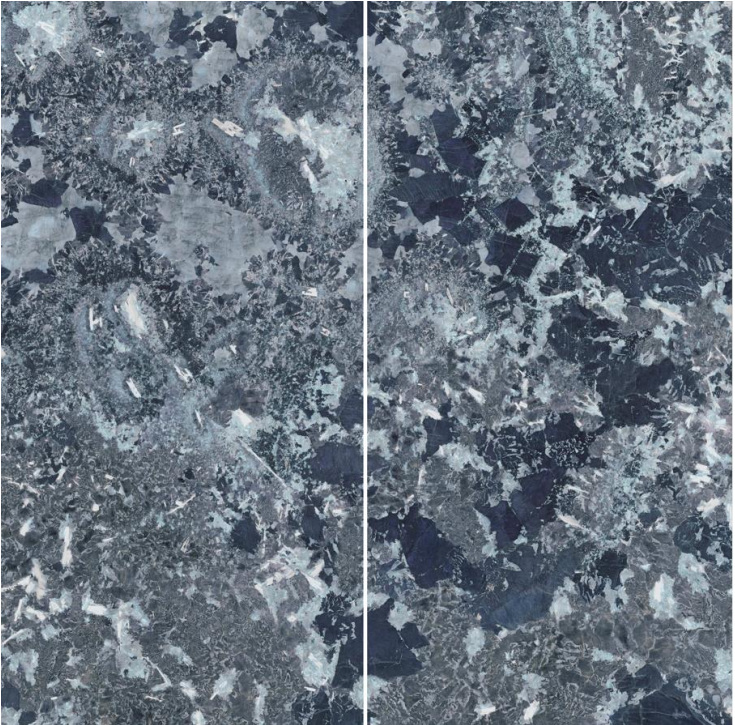
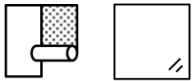
Effetti
FP29270



Gla
Origami Wall - Glossy

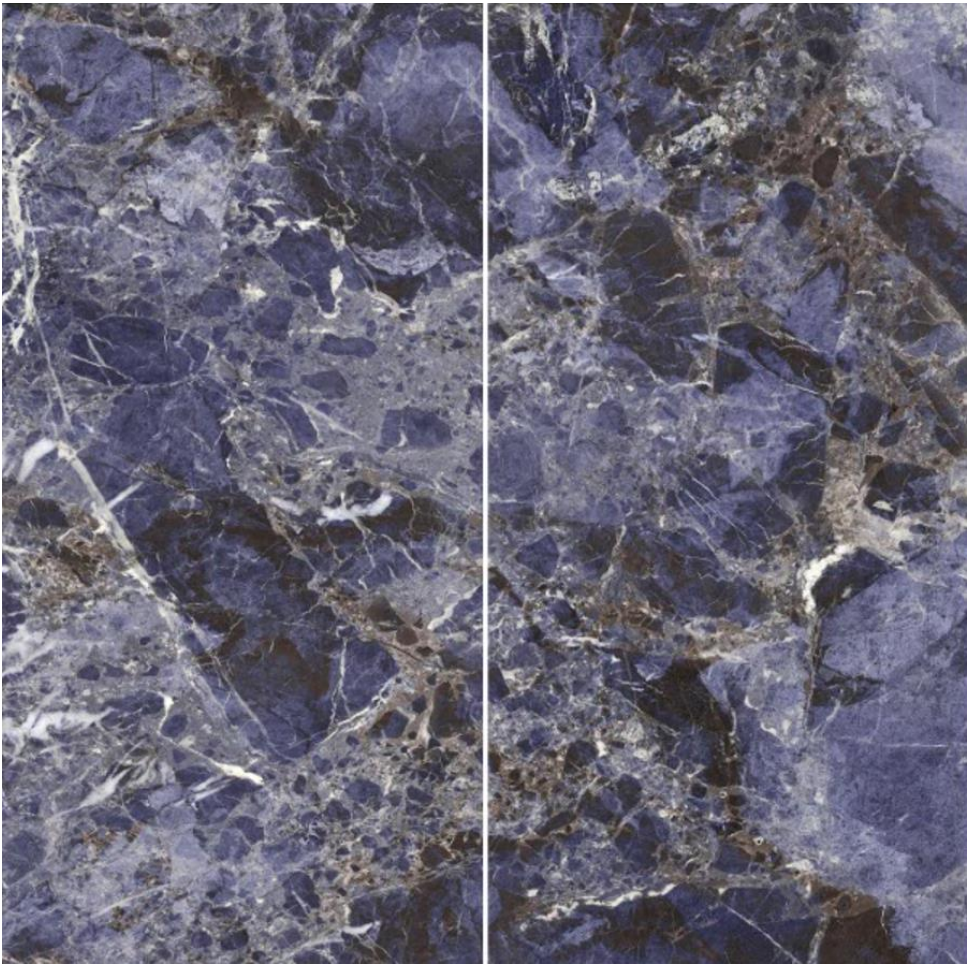
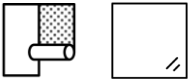


Marmi ed Onici
FP31275



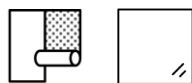


Marmi ed Onici
SHP31063A

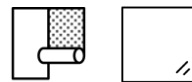




Decori
FP33998

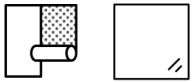


Decori
FP33990A



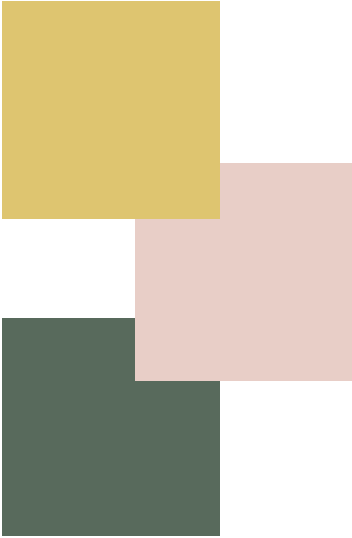
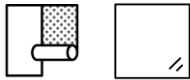


Decori
FP33665D

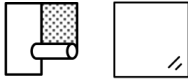




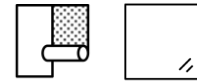
Decori
FP34257



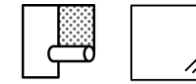
Decori
FP34006



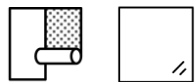
Marmi
FP34295A



Decori
FP34263

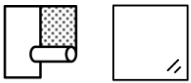


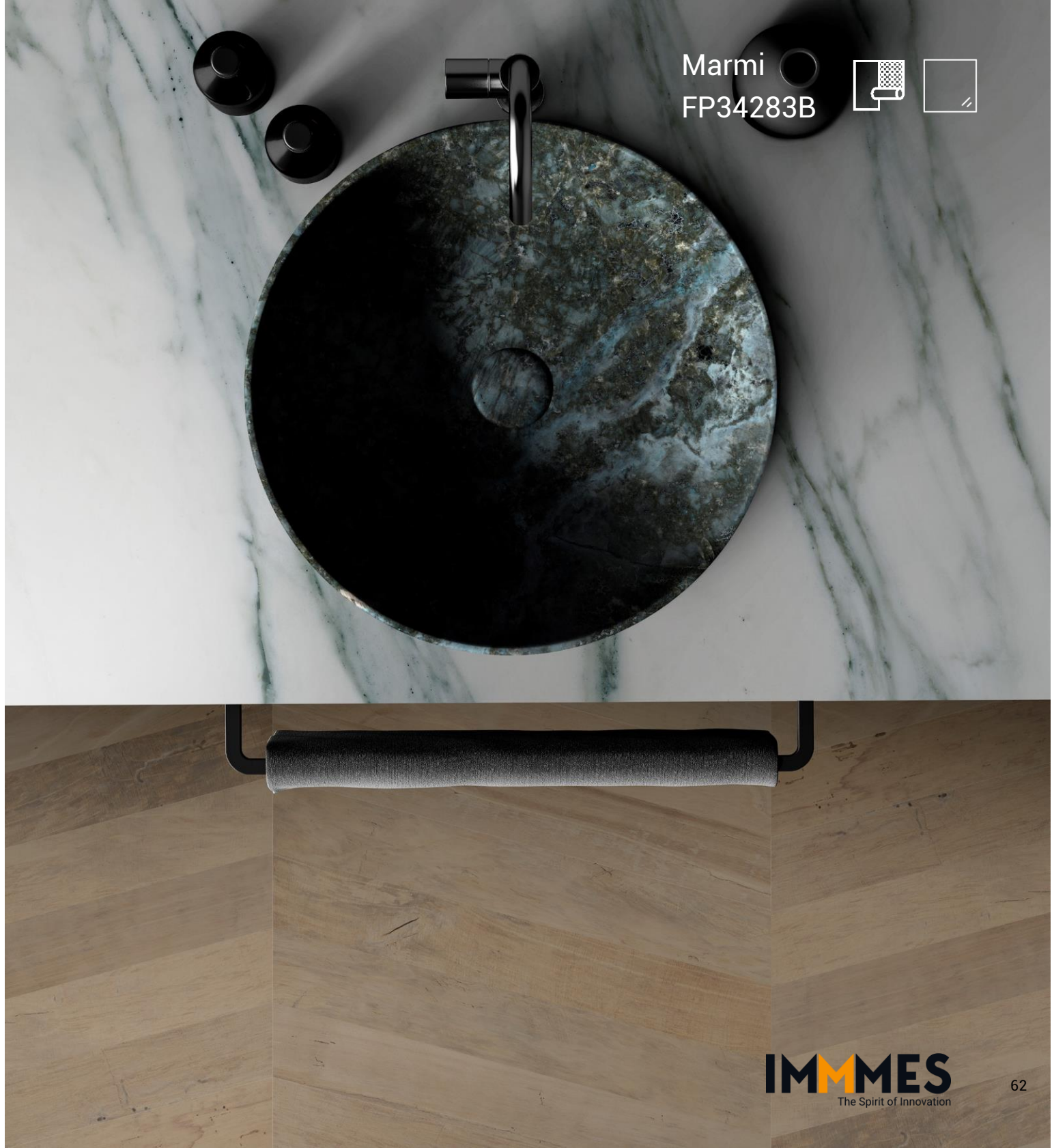
Electric Marble
FP32318





Preziosi
FP34202

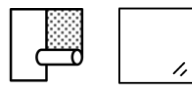




Effetti
FP31311C



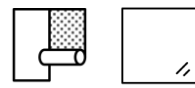
Effetti
FP31363



Marmi
FP34293



Marmi
FP34300



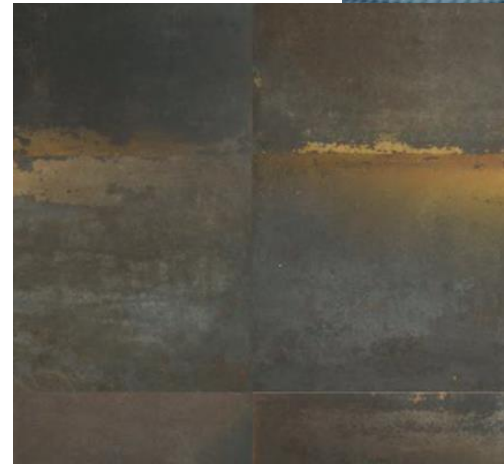
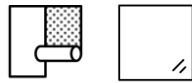
Preziosi
FP28169 -mod



Dining rooms and kitchens



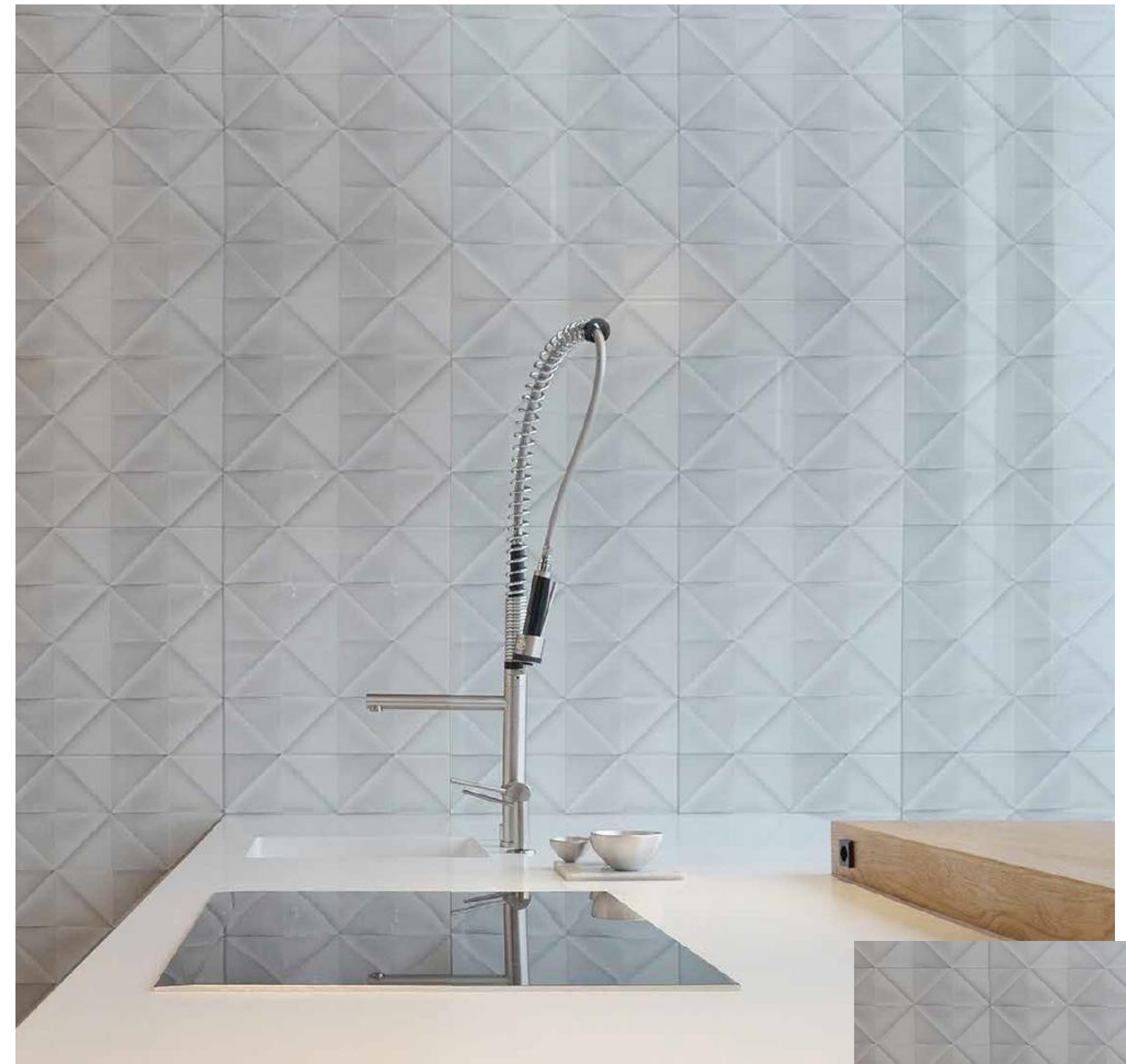
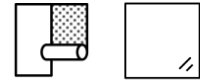
Gla
Take Off Wall - Glossy



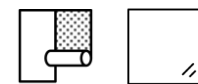
Effetti
SHP31718A



Effetti
FP30491

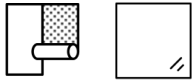


Gla
Origami Wall - Glossy

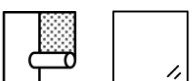




Decori - Narcissus
FP33820

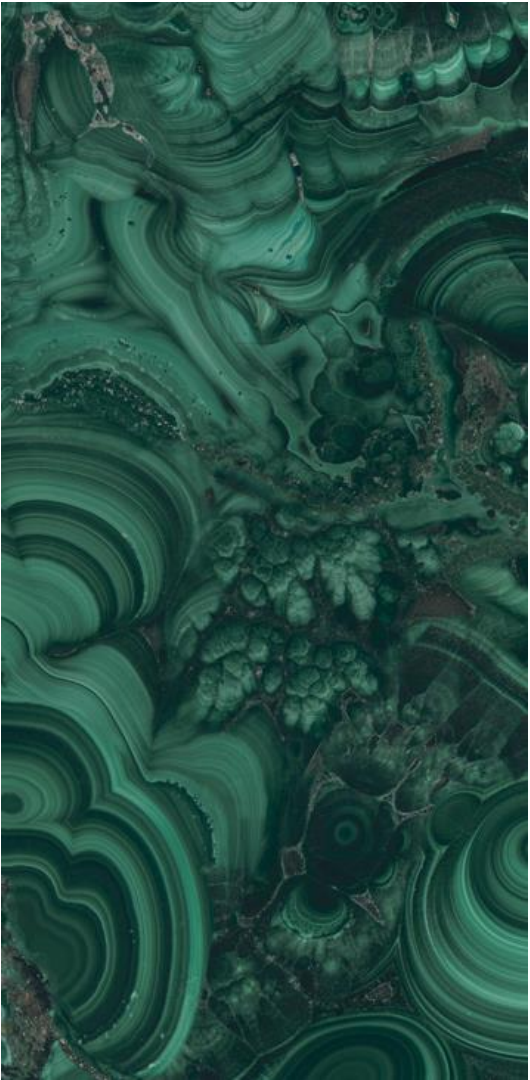
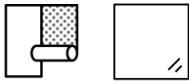


Decori - Paloma
FP34269

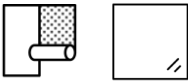




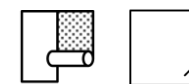
Marmi
FP34283A



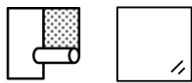
Marmi ed onici
FP31149B



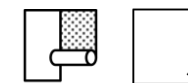
Effetti
SHP33657

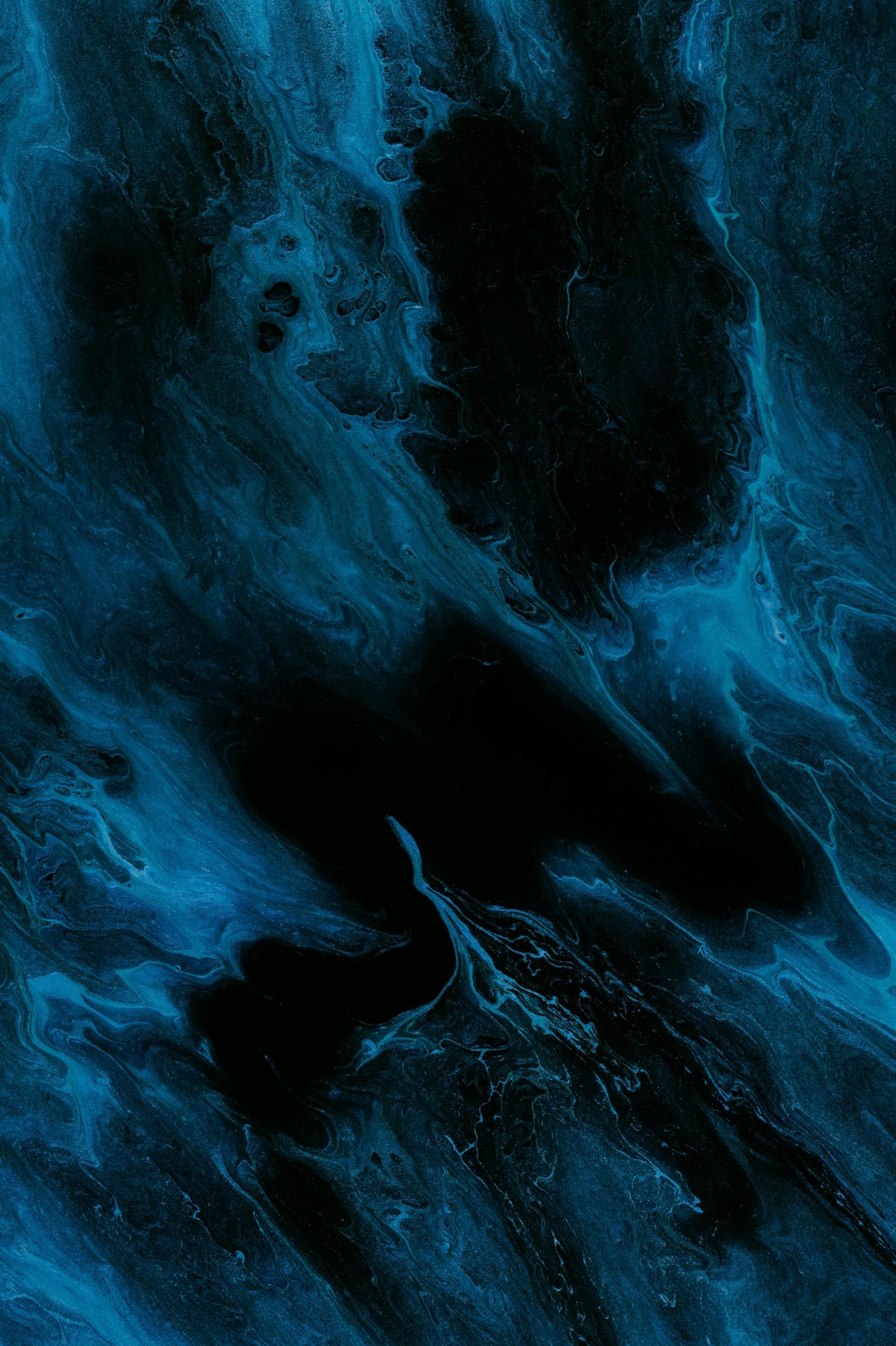


Effetti
SHP33657A



Preziosi
SHP33419B



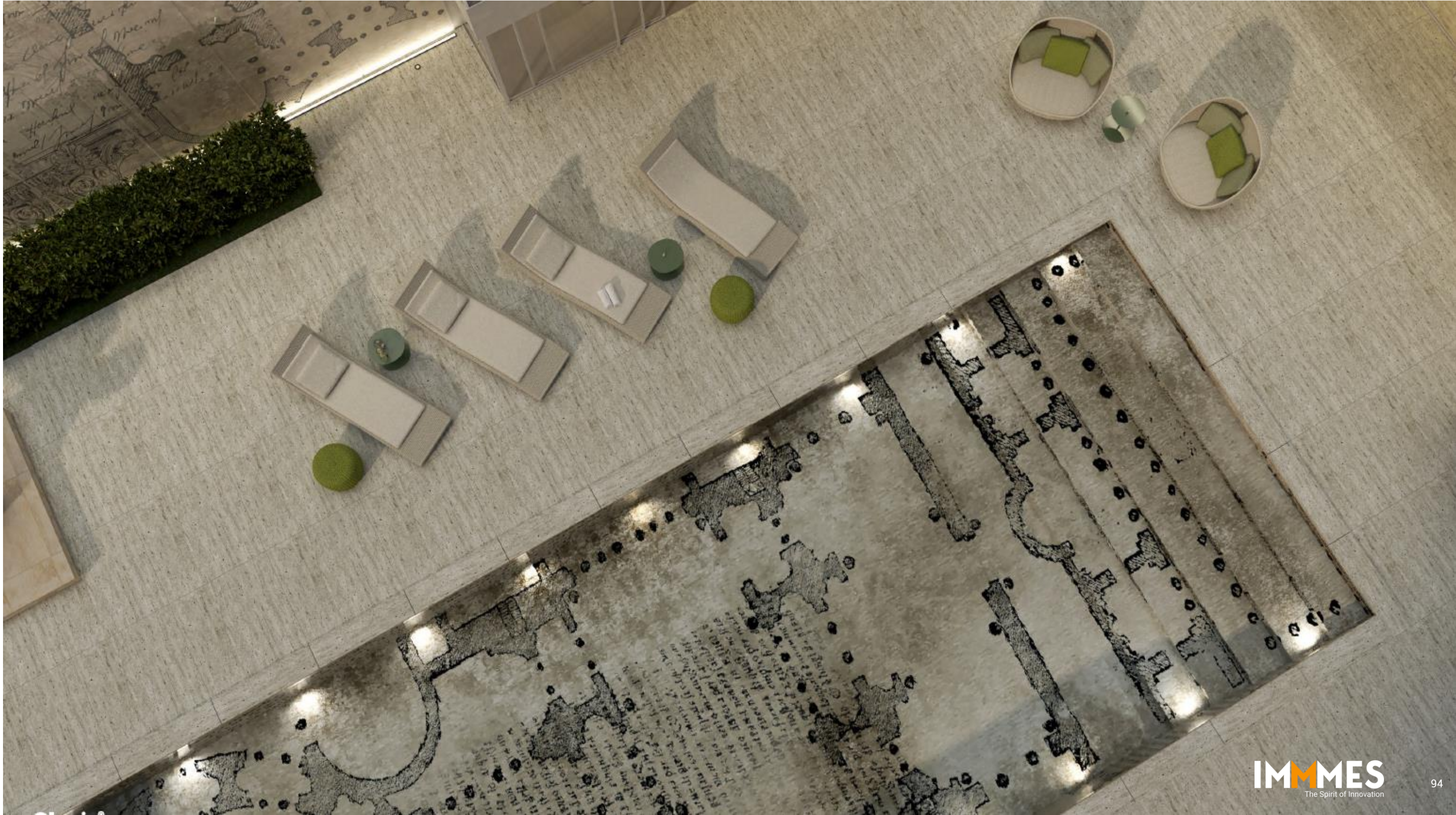


Swimming pools and external

Gla
The Collector's House



Gla
The Collector's House



Gla
The Collector's House



Gla The Collector's House



memories collection_
Templum



Stone collection_
Travertine white



memories collection_
Forum



IMMMES S.r.l.
Via dell'Industria, 5
30010 Campagna Lupia (Venice) Italy
Phone +39 041 5140453

info@immmes.com | www.immmes.com